



Y.S.PARK Makeup Control Brush Ethical Series

The Y.S.PARK Makeup Control Brush is designed to be held in a variety of ways for all users regardless of gender or hand size. Makeup used to be considered for women, however nowadays this idea is gradually changing so we created a neutral design that enables everyone the opportunity to enjoy makeup comfortably.



Delicately Handmade Brushes

Made in Kumano

Kumano brushes are made in Kumano, a city in Hiroshima Prefecture, Japan, where each brush is handmade by the world's most skilled craftsmen. The product's quality is trusted by top artists from all around the world.

Each “Ethical Series” brush is delicately handmade with care and is made of high-quality synthetic fibre without animal substances. It is allergy-friendly for those who are allergic to animal fibre as well as hygienic as the brushes are washable, preventing germs from spreading.

*The term ‘ethical’ can refer to products that are purchased and consumed with the environment, people, and society in mind.

Our “Ethical Series” makeup brushes contribute to a more sustainable world by using high-quality synthetic fibres.



Easy to Hold for All Users Regardless of Gender or Hand Size

One-of-a-kind Handle Design

The Y.S.PARK Makeup Control Brush is designed to be held in a variety of ways for all users regardless of gender or hand size. Makeup used to be considered for women, however this idea is gradually changing nowadays so we created a neutral design that enables everyone the opportunity to enjoy makeup comfortably.

Whether you hold the top of the handle or close to the fibres, it can be held comfortably making it excellent for both personal and professional use.

A streamline design that fits naturally in the hands and fingers.

Designed to provide a secure grip no matter where you hold it.



Product Lineup



Lip / Flat 10mm

YS-CE01-LP

An almighty brush to easily draw outlines.



Eye brow / Angled 7mm

YS-CE02-EB

Ideal for drawing defined and fine eyebrows. Use the angle to follow the curve of the eye.



Eyeshadow / Round & Flat 6.3mm

YS-CE03-ES

A basic eyeshadow brush. For tightening gaps between the eyelashes. Can also be used as an eyeliner brush.





Eyeshadow / Round & Flat 11.5mm

YS-CE04-ES

An easy to use, basic eyelid brush.



Eyeshadow / Round & Flat 16mm

YS-CE05-ES

Gentle to the skin, creating a soft tone. Easy to apply with a light touch.



Eyeshadow / Tapered 10mm

YS-CE06-ES

Ideal for drawing thicker lines on upper lashlines, or for blending fine gradations.



Highlight / Angled 30mm

YS-CE07-HL

Optimal for highlighting around the eye area and T-zone. Can also be used for blush.



Cheek / Round & Flat 38mm

YS-CE08-CH

Designed to fit the facial structure and calculated to achieve a natural tone. Can apply lightly for a natural look.



Liquid / Round & Flat 30mm

YS-CE09-LQ

Synthetic fibres with excellent oil blending properties enable liquid foundation to be spread quickly, lightly, and evenly.



Powder / Round & Flat 50mm

YS-CE10-PD

Can be used in a horizontal position to apply powder on small detail. Can also be used for contouring.



Eyebrow / Comb & Brush

YS-CE11-EB

To shape eyebrows and blend applied product with the brush, and a comb for grooming



Eyelash / Spoolie / Tapered

YS-CE12-EL

A small spoolie to use even for smaller areas. Long, soft bristles to create natural, fluffy brows.



Eyelash / Spoolie / Straight

YS-CE13-EL

An all-purpose straight, firm spoolie to neaten eyebrows, upper and lower lashes, and to fix applied product.



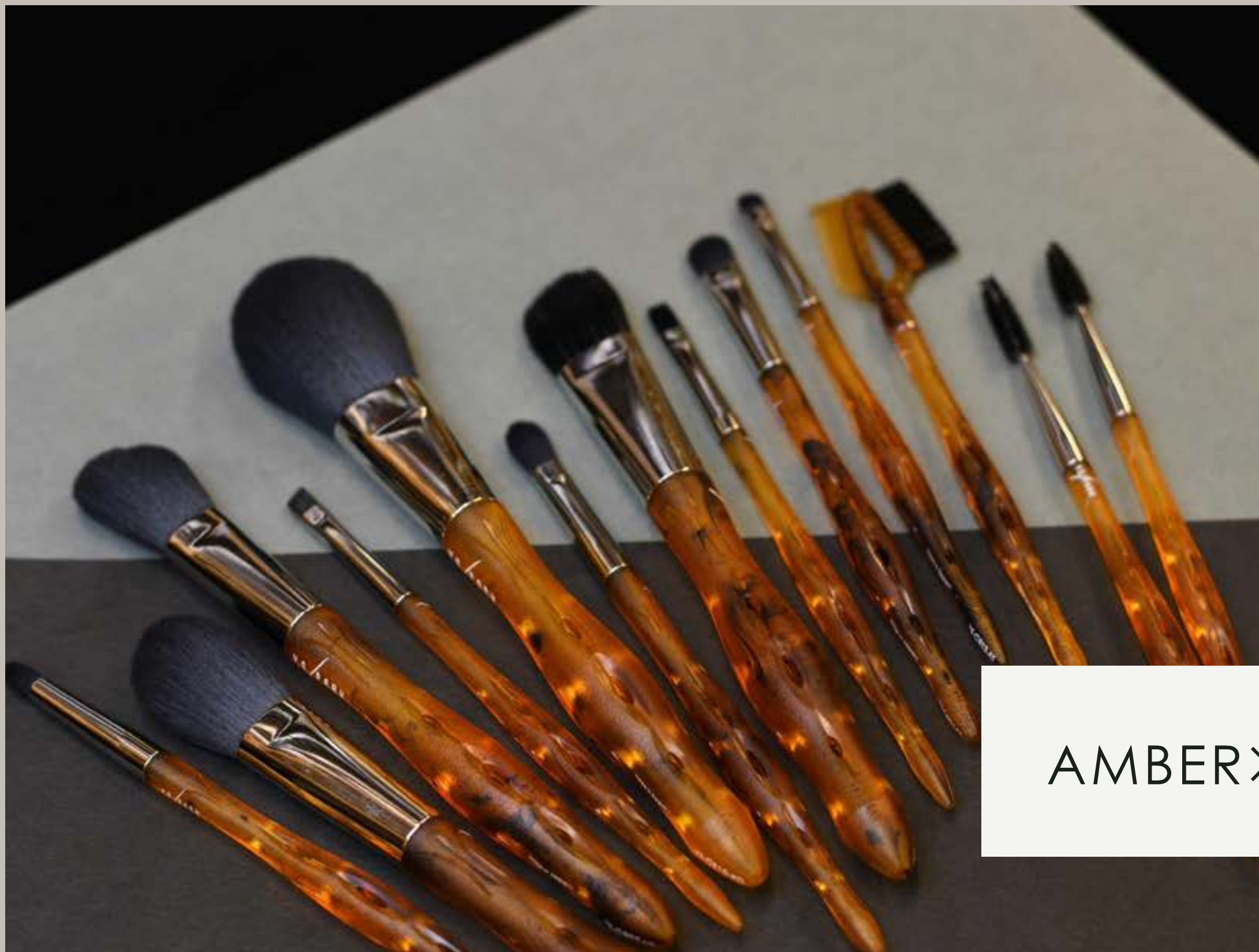
Colour Lineup



BLACK×WHITE



BLACK×BLACK



AMBER×BLACK

Storing and Handling

○ Please note that the colour of dyed fibre may fade while washing. ○ Do not use in direct sunlight or with a hair dryer. ○ Do not put the product in the washing machine, as this may cause the tips to fall off and the dyed fibre to fade or cause damage. ○ This may not be used for any purpose other than makeup. ○ Keep out of reach of children. ○ Do not disassemble or modify the product. ○ If the fibres need reshaping, soak them in warm water and use a towel to collect the excess moisture. Reform the brush shape and dry in the shade.

Frequently Asked Questions

FAQ

Swipe Up to Read

Q. Do your makeup brushes contain animal hair?

Our “Ethical Series” makeup brushes are made of high quality ethical fibres and do not contain any animal hair.

Q. What are the fibres of the brushes made of?

Our “Ethical Series” makeup brushes use high quality ethical fibres made from nylon and polyester.

Q. Do you test on animals?

We do not test any of our products on animals.

Q. What is the handle made from?

It is made from ABS resin with added antibacterial ingredients.

Q. What are the ferrules made of?

It is made of brass with a nickel plating on the surface.

Q. Can someone with allergies use the brushes?

The fibres are made of synthetic fibres so they are allergy-friendly to those who are allergic to animals. Please consult with a healthcare professional if you are concerned about allergies relating to the metal, handle, or the makeup you are using.

Q. How should I store my makeup brushes?

Keep away from direct sunlight, humidity and place them separately lying down. Please make sure the brushes have fully dried after you have used or cleaned them as bacteria can grow and damage the brushes.

Q. How many years can I use the brushes? and when should I replace them?

It depends on how you use them, how often you use them, and how you clean them. If the fibres begin to spread, decrease in density, the elasticity is low, or if the quality when using the brushes seems to have fallen, then it is time to replace them.

Q. Can the makeup brushes be disinfected?

To disinfect the handle, wipe it down with a cloth using products that include ethanol or a similar disinfectant. Do not leave the brushes in any liquid as the fibres may fall out, be damaged, or discolour.

Q. Can I fix the fibres that have lost their shape?

Soak the fibres in warm water, gently squeeze out the excess liquid, reshape the fibres back to its original form and leave in the shade to dry.

Q. What is the packaging made of? and is it recyclable?

Our “Ethical Series” makeup brushes are made of FSC certified paper packaging which can 100% be recycled.

Q. Does this product have a warranty?

We have made every effort to ensure the quality of this product. However, in the event that the product seems to be damaged or faulty, please contact your local distributor. Please note that we are unable to fulfil your requests if the quality of the product has degraded or broken over time, or if it has been damaged due to improper use.

Q. How should I look after my brushes?

Daily care: For powder brushes, dab the surface of the brush with the palm of your hand to remove the powder. For liquid brushes, wipe gently over a tissue on a table, gliding the surface of the brush.

Q. How often should I wash my brushes?

You should wash them when there are noticeable stains, or when the makeup does not apply as well as it should. Do not wash the brushes too frequently as this will cause the quality of the fibres to deteriorate quickly. Do not leave the brushes in any liquid as the fibres may fall out, be damaged, or discolour.

How to Clean Your Makeup Brushes



The brushes can be washed with hot water if needed.



01

Soak and swirl the brush in lukewarm water.

02

Apply “Y.S.PARK Ethical Soap” or a mild detergent to the ends, and press and wash gently.



03

Rinse well and gently comb through the fibres.

04

Dry the fibres with a towel or cloth.



05

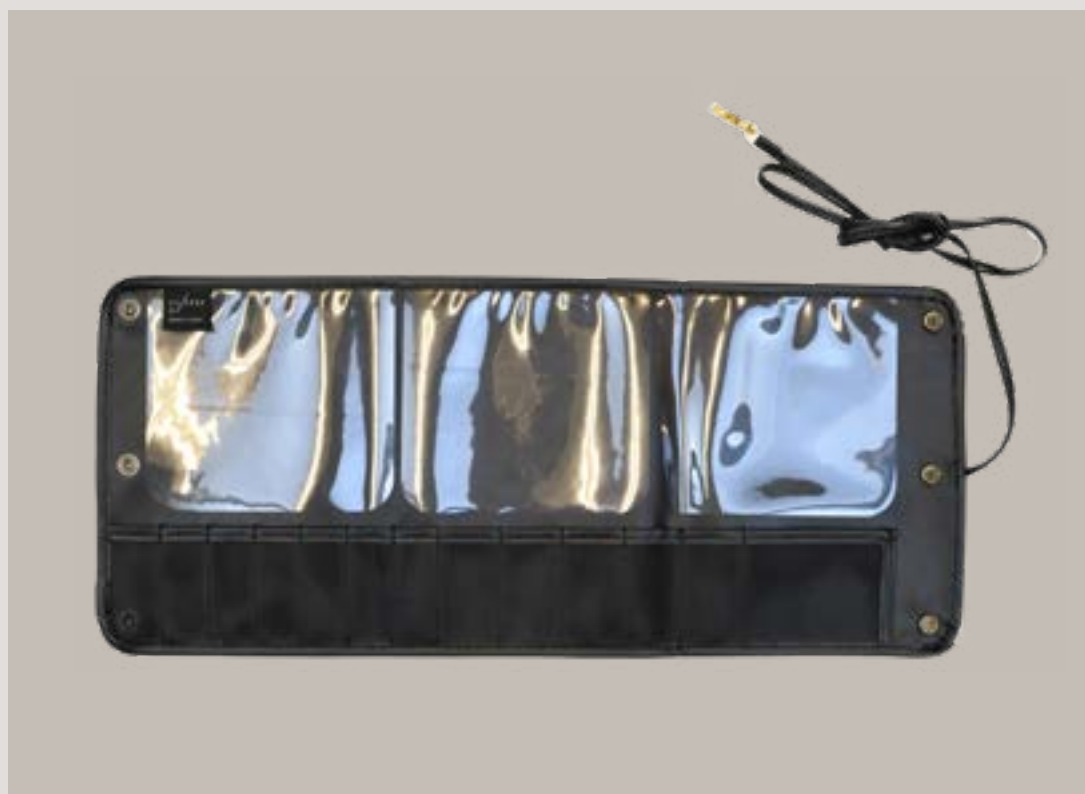
Reshape the fibres.

06

Dry in the shade with a well-ventilated area and make sure the fibres are facing upwards to ensure that it dries.



Related Products



Size : 560×240mm

Weight : 215g

Capacity : 13 Pockets

Y.S.PARK Makeup Brush CASE

YS-MUB CASE13

A case to store your makeup brushes. Have it stand by clipping the buttons together.

High Quality and Made in Japan.



Transparent Soap for Makeup Brushes

Y.S.PARK Ethical Soap

No Fragrances, No Artificial Colourants and No Preservatives

Contains antibacterial and deodorizing ingredients that gently wash the fibres.

Can also be used on the skin. Made in Japan 80g / 20g



Complete *Ethical* Set 10

Includes 10 Brushes, Ethical Soap 20g and MUB Case